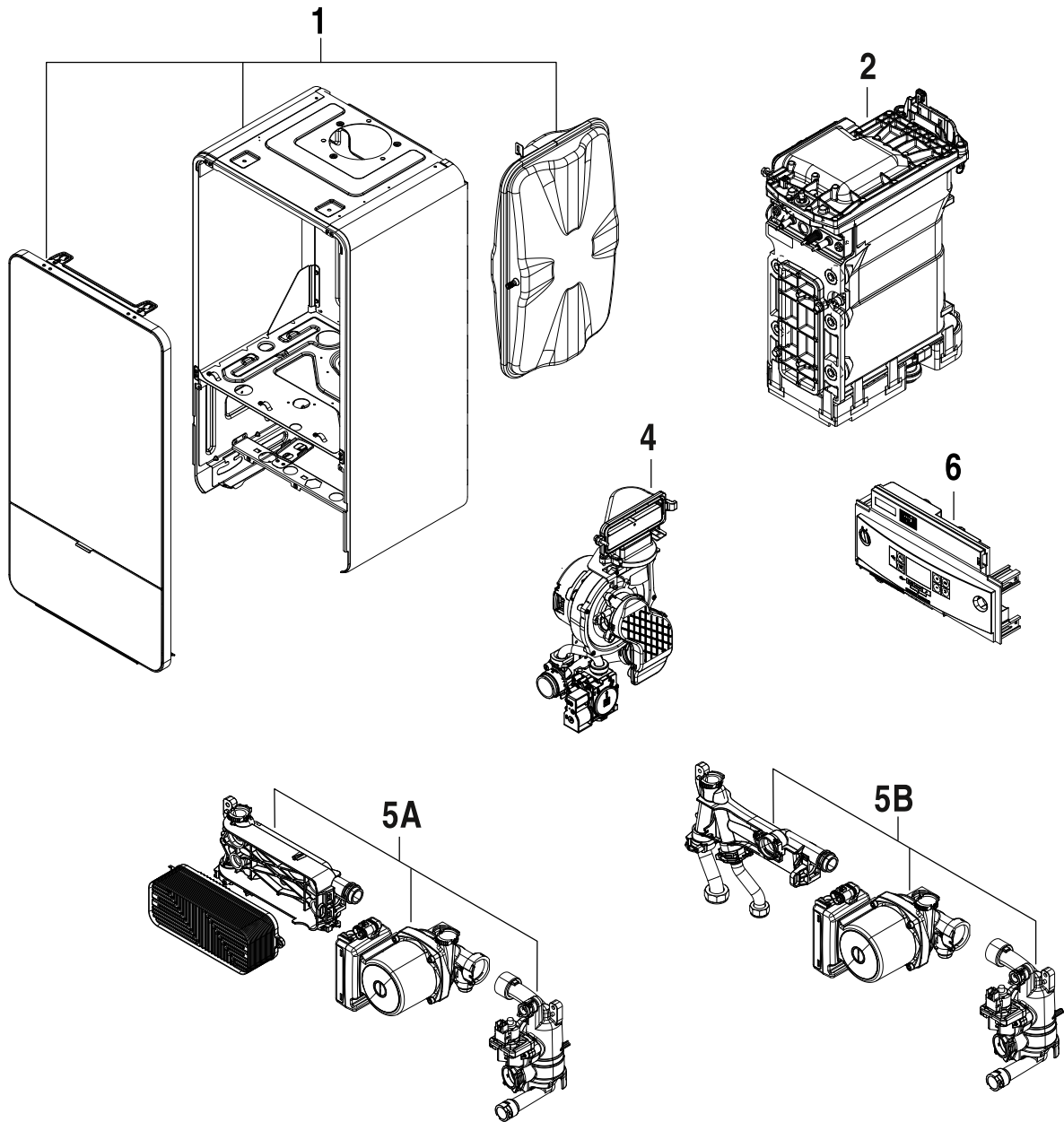


# GC7000iW 35-42 B/C/BC 23/21



8738894242.aa.RO



**[de] Wichtige Hinweise zur Installation/Montage**

Die Installation/Montage muss durch eine für die Arbeiten zugelassene Fachkraft unter Beachtung der geltenden Vorschriften erfolgen.

**[en] Important notes on installation/assembly**

The installation/assembly must be carried out by a qualified contractor, following these instructions and in compliance with the applicable regulations.

**[fr] Instructions importantes pour l'installation/le montage**

L'installation/le montage doit être effectué(e) par un spécialiste qualifié pour les opérations concernées et dans le respect de la présente notice et des prescriptions applicables.

**[bg] Важни указания във връзка с инсталацията/монтажа**

Инсталацията/монтажът трябва да се извършва от лицензиран за работите специалист в съответствие с настоящото ръководство и с приложимите разпоредби.

**[cs] Důležité pokyny k instalaci/montáži**

Instalaci/montáž musí při dodržení pokynů uvedených v tomto návodu a platných předpisů provést odborný pracovník s příslušným oprávněním pro tyto práce.

**[da] Vigtige anvisninger til installationen/monteringen**

Installationen/monteringen skal foretages af en godkendt installatør under overholdelse af denne vejledning og de gældende forskrifter.

**[el] Σημαντικές υποδείξεις για την εγκατάσταση/συναρμολόγηση**

Η εγκατάσταση/τοποθέτηση πρέπει να ανατίθεται σε εκπαιδευμένο για τις συγκεκριμένες εργασίες τεχνικό προσωπικό με τήρηση αυτών των οδηγιών καθώς και των σχετικών προδιαγραφών.

**[es] Indicaciones importantes para instalación/montaje**

La instalación/el montaje debe realizarla personal especializado que esté autorizado para realizar estos trabajos y que tenga en cuenta estas instrucciones y la normativa vigente.

**[et] Olulised juhised paigaldamiseks/montaažiks**

Paigaldamist/montaaži tohib läbi viia vaid selleks volitusi omav spetsialist, arvestades kehtivaid nõudeid.

**[nl-BE] Belangrijke aanwijzingen betreffende de installatie/montage**

De installatie/montage moet worden uitgevoerd door een voor de werkzaamheden geautoriseerde installateur rekening houdend met deze handleiding en de geldende voorschriften.

**[fi] Tärkeitä asennus- ja kokoonpano-ohjeita**

Näihin töihin hyväksytyin ammattiasentajan pitää suorittaa asennus- ja kokoonpanotyöt voimassa olevien määräysten mukaisesti.

**[hu] Fontos tudnivalók az installálás/szereléshez**

A telepítést/szerelést egy, a munkálatokra felhatalmazott szakembernek kell végeznie, jelen utasítás és az érvényes előírások figyelembevételével.

**[it] Avvertenze importanti per l'installazione/il montaggio**

L'installazione/il montaggio deve aver luogo ad opera di una ditta specializzata ed autorizzata in osservanza di queste istruzioni e delle direttive vigenti.

**[ka] მნიშვნელოვანი მითითებები ინსტალაციისთვის/მონტაჟისთვის**

ინსტალაცია/მონტაჟი უნდა განხორციელდეს საშუალებისთვის დამკვეთელი კვალიფიციური პერსონალის მიერ, მოქმედი განაწესის დაცვით.

**[lt] Svarbios instaliavimo ir (arba) montavimo nuorodos**

Instaliavimo / montavimo darbus, laikydamiesi šios instrukcijos reikalavimų ir galiojančių taisyklių, privalo atlikti šioms darbams įgalioti specialistai.

**[lv] Svarīgi norādījumi par iekārtas uzstādīšanu / montāžu**

Uzstādīšanu/montāžu jāveic atbilstošajiem darbiem sertificētam speciālistam, ievērojot šo instrukciju un spēkā esošos noteikumus.

**[nl] Belangrijke aanwijzingen betreffende de installatie/montage**

De installatie/montage moet door een erkend installateur volgens de geldende voorschriften worden uitgevoerd.

**[no] Viktig informasjon om installasjon/montering**

Installasjonen/monteringen skal gjennomføres av autoriserte installatører, og installasjonsanvisningen samt gjeldende forskrifter skal følges.

**[pl] Ważne wskazówki dotyczące instalacji/montażu**

Instalację/montaż powinien wykonać specjalista uprawniony do tego typu prac z uwzględnieniem informacji podanych w niniejszej instrukcji oraz aktualnie obowiązujących przepisów.

**[pt] Indicações importantes relativas à instalação/montagem**

A instalação/montagem deve ser efectuada por um técnico autorizado para os trabalhos, respeitando este manual e as prescrições válidas.

**[ro] Indicații importante privind instalarea/montajul**

Instalarea/montajul trebuie realizate de către un specialist autorizat pentru lucrările respective, respectându-se prezentele instrucțiuni și prescripțiile valabile.

**[ru] Важные указания по подключению/монтажу**

Подключение/монтаж должны выполнять только специалисты, имеющие допуск к выполнению таких работ, при соблюдении требований этой инструкции и действующих норм и правил.

**[sk] Dôležité pokyny týkajúce sa inštalácie/montáže**

Inštaláciu/montáž musí vykonať odborný personál, ktorý má oprávnenie pre výkon týchto prác, pričom musí dodržiavať pokyny uvedené v tomto návode a platné predpisy.

**[sl] Pomembni napotki za namestitvev/montažo**

Inštalacijo/montažo lahko izvede samo pooblaščen strokovnjak ob upoštevanju teh navodil in veljavnih predpisov.

**[sr] Važna uputstva za ugradnju i montažu**

Ovu instalaciju/montažu moraju da obave stručna lica koja su ovlašćena za obavljanje takvih radova u skladu sa ovim uputstvom i važećim propisima.

**[sv] Viktiga anvisningar för installation/montering**

Installationen/monteringen måste utföras av en behörig och tekniskt utbildad person enligt denna anvisning samt gällande föreskrifter.

**[tr] Kurulum/Montaj ile ilgili önemli uyarılar**

Kurulum/montaj, bu çalışmalarını yapmasına müsaade edilen uzman kişiler tarafından işbu kılavuz ve geçerli yönetmelikler dikkate alınarak yapılmalıdır.

**[uk] Важливі вказівки щодо установки/монтажу**

Встановлення/монтаж повинні виконувати фахівці, що допущені до виконання таких робіт, із дотриманням цієї інструкції та діючих приписів.

**[zh] 安装方面的重要提示**

安装和组装工作必须由经过许可的专业人员进行，同时必须遵守本说明书和现行法规的相关要求

**[ar] ملاحظات هامة للتركيب/التجميع**  
يجب أن يتم التركيب/التجميع من قبل متخصص مصرح له بالعمل، مع مراعاة اللوائح السارية.

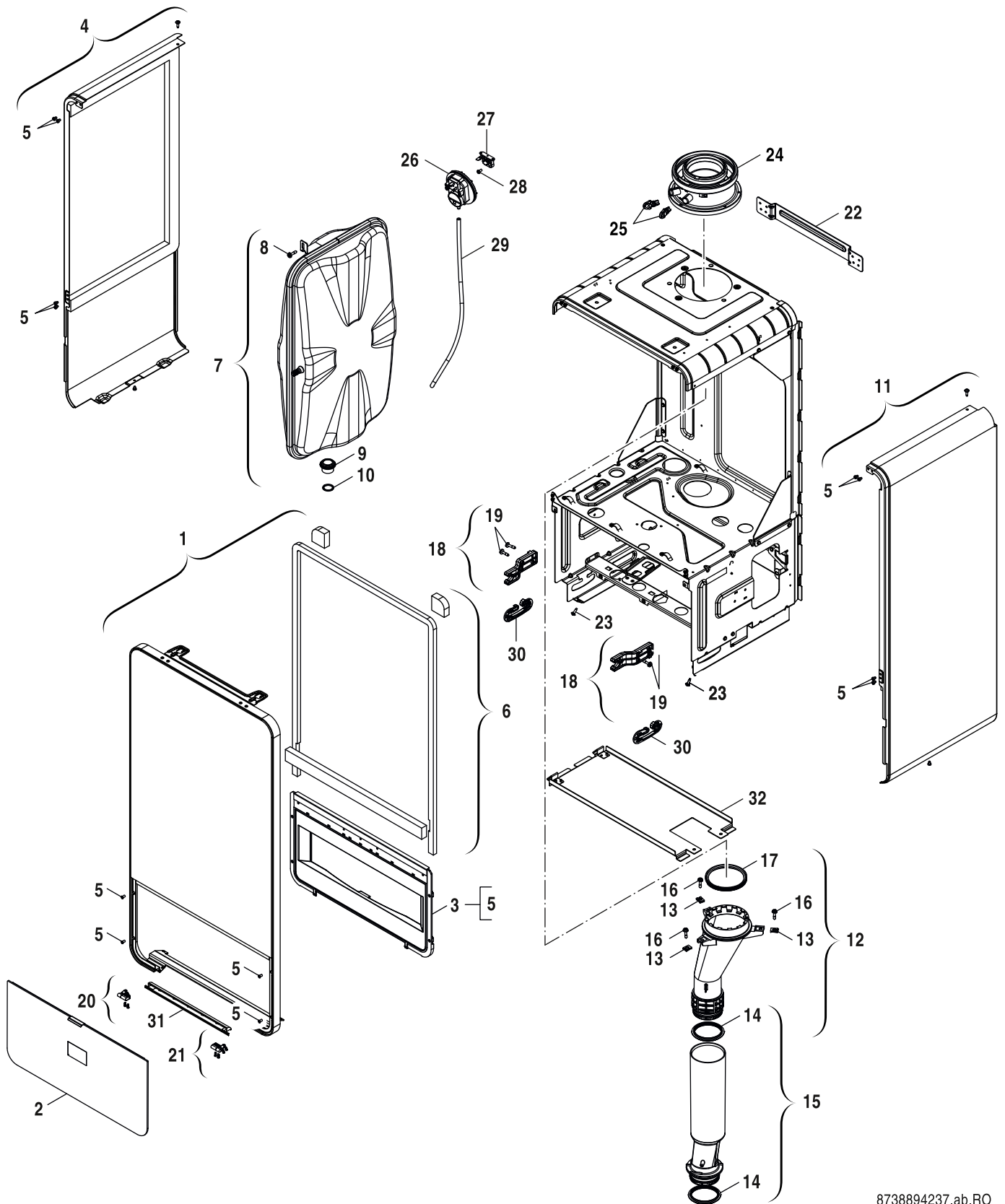
**[fa] تذکرات مهم درباره نصب/مونتاژ**  
نصب/مونتاژ باید توسط فردی حرفه ای که مجاز به انجام این کار است، و همچنین با توجه کامل به مقررات مربوطه انجام شود.

**[az] Quraşdırılma**

Quraşdırılma işinin yerinə yetirilməsi səlahiyyətli bir mütəxəssis tərəfindən və müvafiq qaydalara uyğun olaraq aparılmalıdır.

Ersatzteilliste  
Spare parts list

Liste des pièces de rechange  
Lista parti di ricambio



8738894237.ab.RO

**1**  
Blechteile  
Sheet metal  
Pièces de tôle  
Parti di lamiera

GC7000iW 35-42 B/C/BC 23/21

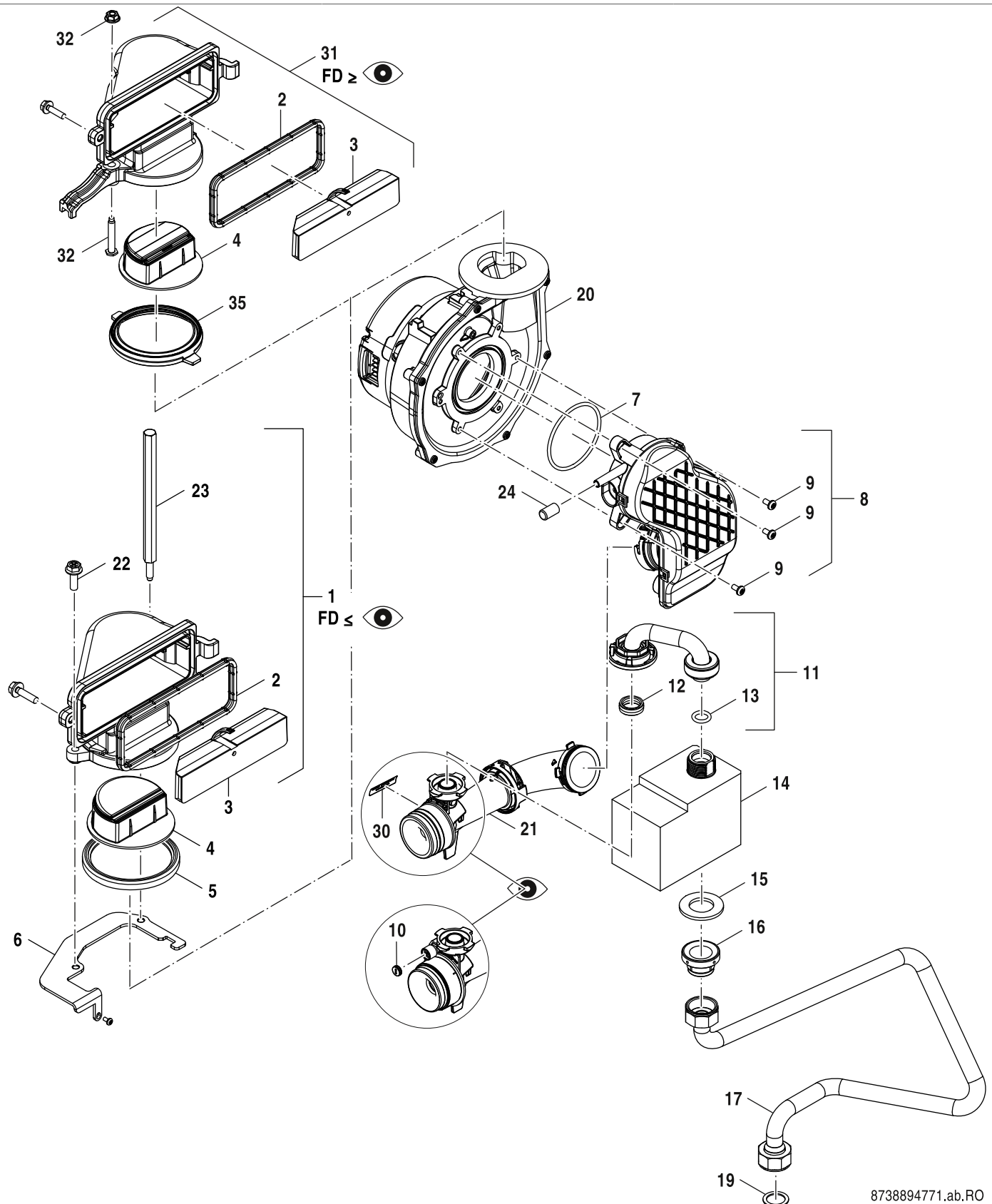






Ersatzteilliste  
Spare parts list

Liste des pièces de rechange  
Lista parti di ricambio



8738894771.ab.RO

**4**

Gasarmatur / Gebläse  
Gas valve / Fan  
Bloc gaz  
Gruppo gas

**GC7000iW 35-42 B/C/BC 23/21**

Pos	Bezeichnung Description Dénomination Descrizioni	Bestell-Nr. Ordering no. Numéro de commande N° d'ordine	7-736-901-100	7-736-901-101	7-736-901-102	7-736-901-103																	Bemerkungen Remarks Remarques Osservazioni
1	Kanal Gas - Luft - Gemisch	8 718 664 674 0	■	■	■																		<=FD957
2	Dichtung (Gas-Luft-Kanal)	8 737 701 451 0	■	■	■																		
3	Schalldämpfer	8 718 666 152 0	■	■	■																		
4	Rückströmsicherung	8 737 709 562	■	■	■																		
5	Dichtring d: 86mm	8 729 000 183 0	■	■	■																		<=FD957
6	Befestigungsblech	8 718 664 942 0	■	■	■																		
7	O-Ring 63x3 (10x)	8 722 880 175 0	■	■	■																		
8	Mischeinheit	8 718 661 853 0	■	■	■																		
9	Schraube M4x8	2 914 411 412 0	■	■	■																		
10	Dichtung Plombierung Venturi-Rohr sw	8 718 662 615 0	■	■	■																		
11	Gasrohr	8 718 668 531 0	■	■	■																		
12	Dichtung (10x)	8 718 662 055 0	■	■	■																		
13	O-Ring 12x3 (10x)	8 718 669 385 0	■	■	■																		
14	Gasarmatur	8 718 668 955 0	■	■	■																		
15	Dichtung Gasarmatur 41x3 (10x)	8 718 668 449 0	■	■	■																		
16	Dichtung	8 718 600 34A 0	■	■	■																		
17	Gasrohr vertikal	8 718 649 895 0	■	■																			
17	Gasrohr vertikal	8 718 650 023 0		■	■																		
18	Haltefeder (10x)	8 714 606 004 0	■	■	■																		
19	Dichtung 30x25x1,5 (10x)	8 710 103 014 0	■	■	■																		
20	Gebläse	8 737 709 295	■	■	■																		
21	Venturi 40 kW	8 737 708 866	■	■	■																		
22	Schraube M6x20 (10x)	8 713 401 130 0	■	■	■																		<=FD957
23	Bolzen Sechskant lang M6 WB5	8 718 662 327 0	■	■	■																		
24	Halter	8 718 641 479 0	■	■	■																		
30	Sicherheitssiegel (Venturi) (10x)	8 737 708 988	■	■	■																		
31	Gas-Luft-Kanal WB5-II+	8 737 714 115	■	■	■																		>=FD958
32	Mutter M6 + Schraube M6x30-5.8	8 737 709 304	■	■	■																		>=FD958
35	Lippendichtung	8 737 709 314	■	■	■																		>=FD958

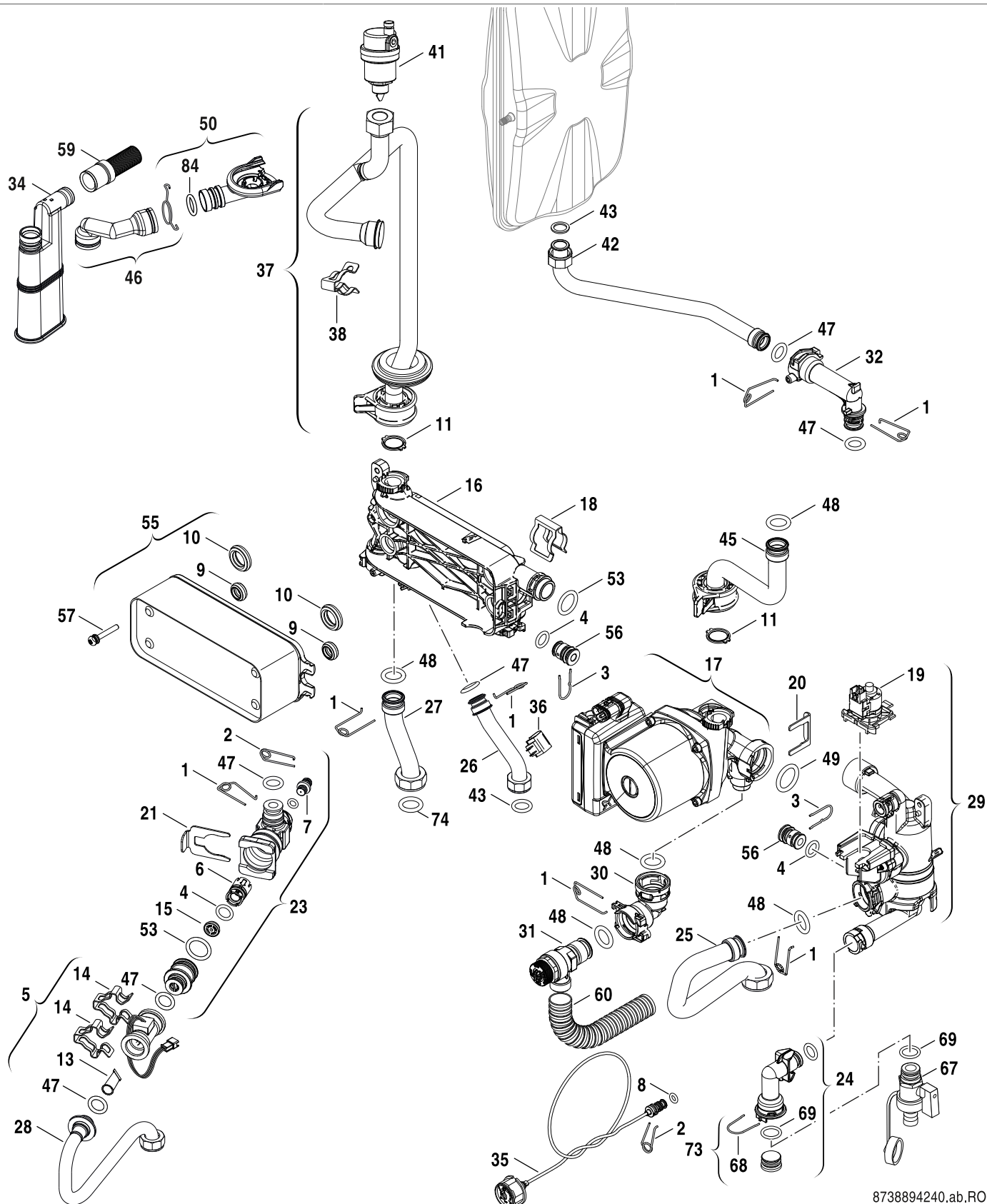
GC7000iW 35-42 B/C/BC 23/21

Gasarmatur / Gebläse  
Gas valve / Fan  
Bloc gaz  
Gruppo gas

4

Ersatzteilliste  
Spare parts list

Liste des pièces de rechange  
Lista parti di ricambio



8738894240.ab.RO

5A

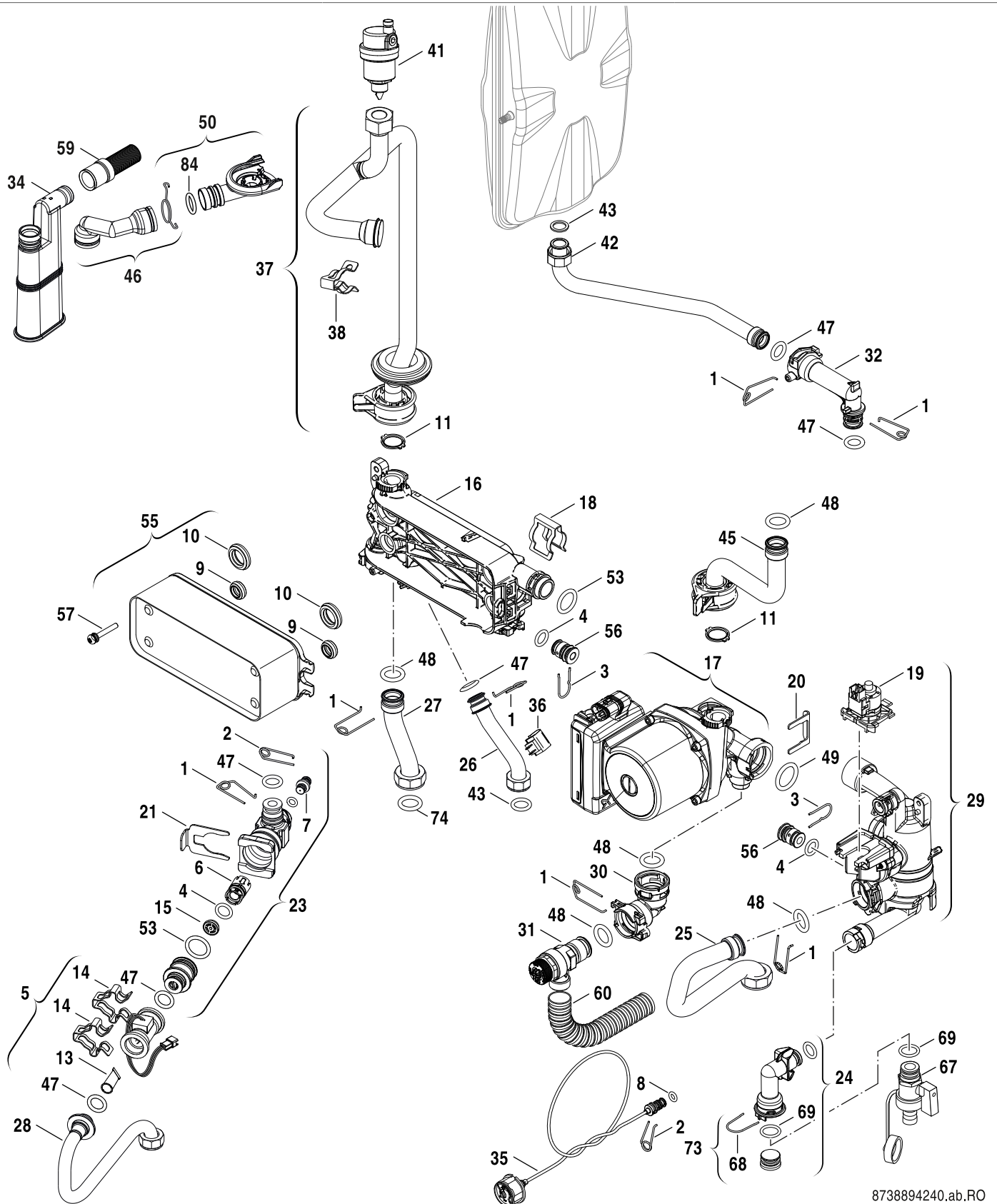
Hydraulikblock  
Hydraulic block  
Corps hydraulique  
Blocco idraulico

GC7000iW 35-42 B/C/BC 23/21



Ersatzteilliste  
Spare parts list

Liste des pièces de rechange  
Lista parti di ricambio



8738894240.ab.RO

5A

Hydraulikblock  
Hydraulic block  
Corps hydraulique  
Blocco idraulico

GC7000iW 35-42 B/C/BC 23/21

Pos	Bezeichnung Description Dénomination Descrizioni	Bestell-Nr. Ordering no. Numéro de commande N° d'ordine																			Bemerkungen Remarks Remarques Osservazioni
68	Haltefeder (10x)	8 716 103 487 0	■	■																	
69	O-Ring 15,54x2,62 (10x)	8 716 771 156 0	■	■																	
73	Stopfen plastik	8 716 012 625 0	■	■																	
74	Dichtung 23,9x17,2x1,5 (10x)	8 710 103 043 0	■	■																	
84	O-Ring 26,34 x 5,33 (5x)	8 710 205 098 0	■	■																	

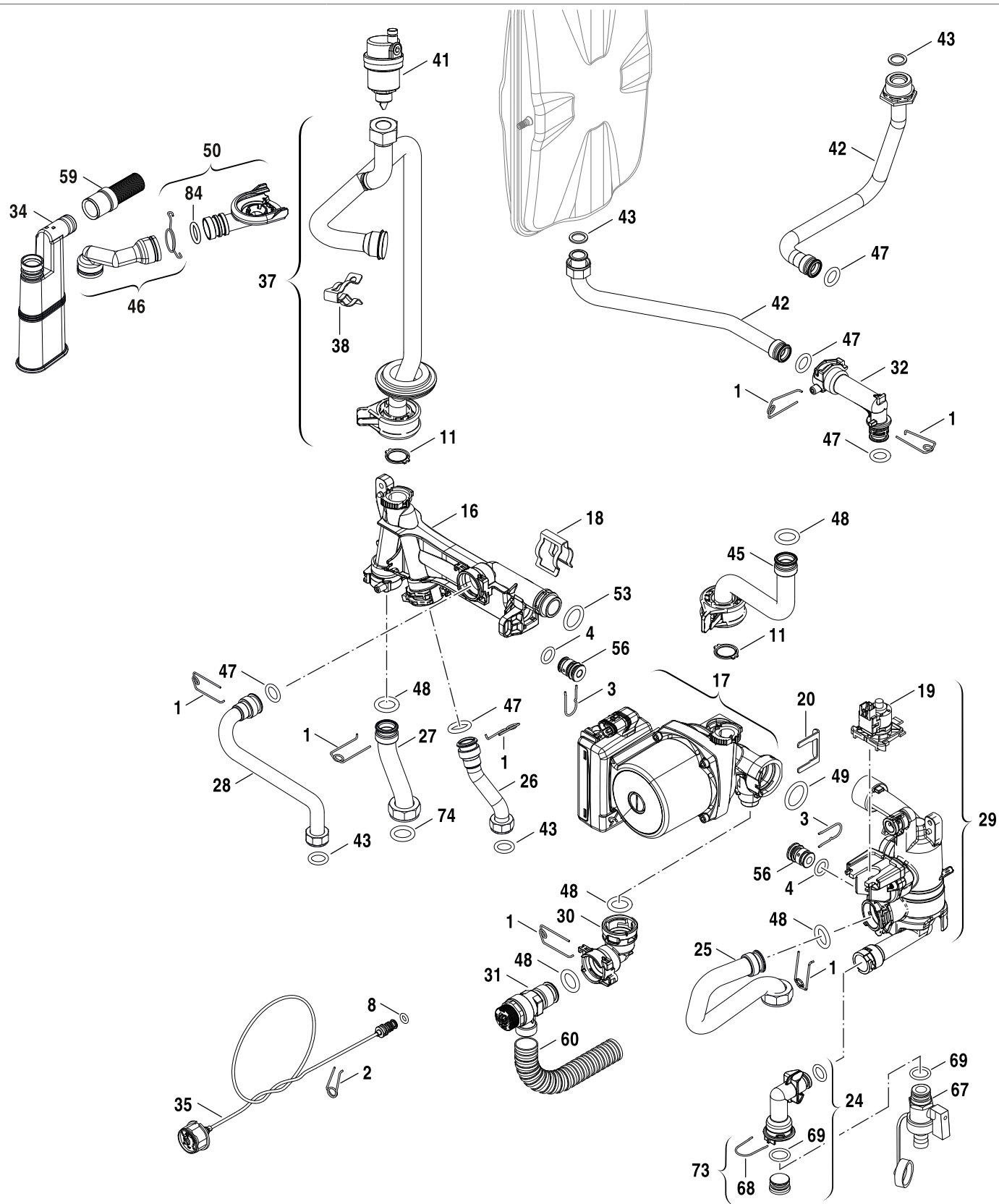
**GC7000iW 35-42 B/C/BC 23/21**

Hydraulikblock  
Hydraulic block  
Corps hydraulique  
Blocco idraulico

**5A**

Ersatzteilliste  
Spare parts list

Liste des pièces de rechange  
Lista parti di ricambio



8738894241.ac.RO

Hydraulikblock  
Hydraulic block  
Corps hydraulique  
Blocco idraulico

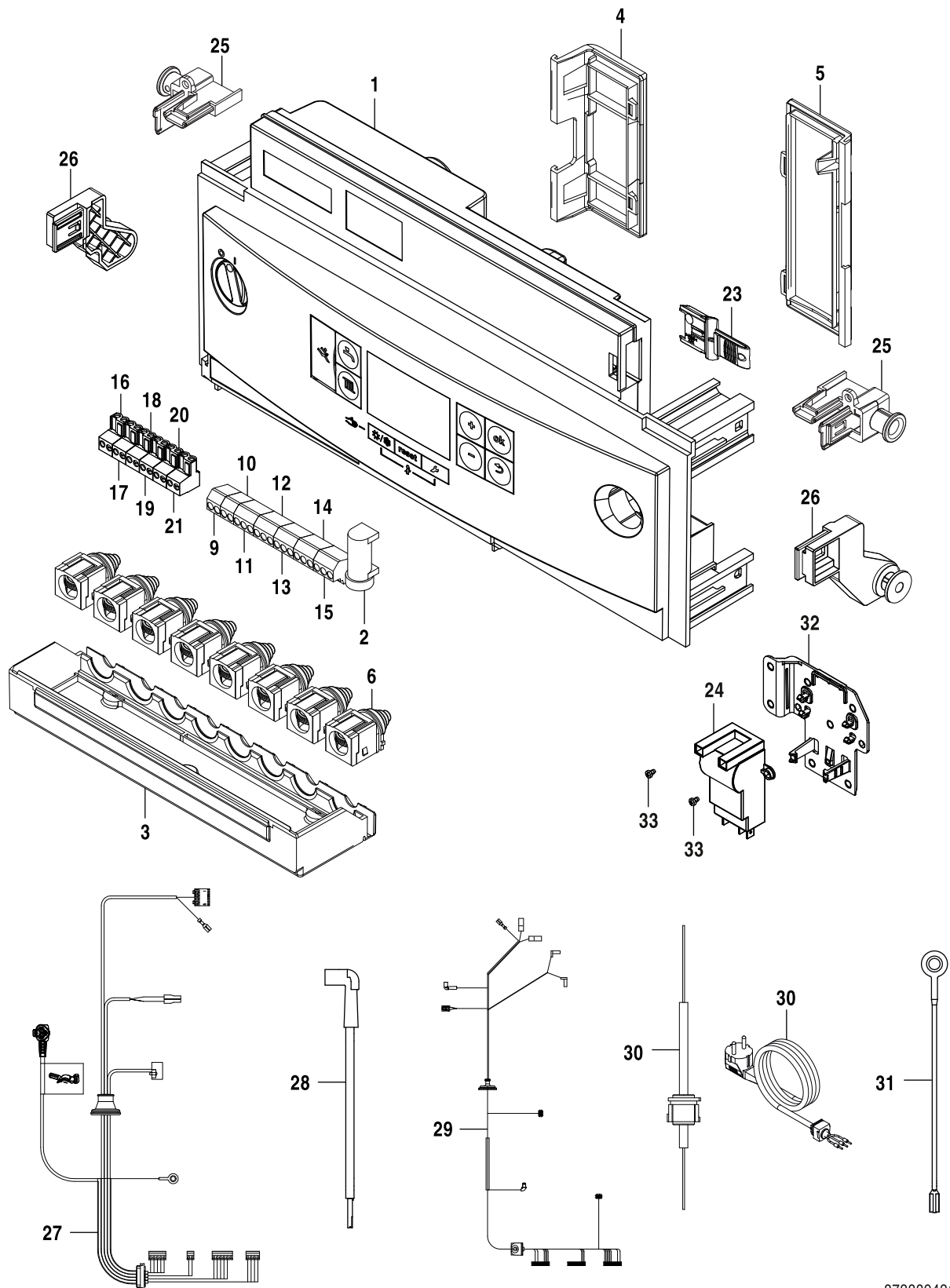
GC7000iW 35-42 B/C/BC 23/21

5B



Ersatzteilliste  
Spare parts list

Liste des pièces de rechange  
Lista parti di ricambio



8738894311.aa.RO

**6** Schaltkasten  
Control box  
Tableau de commande  
Quadro comandi

**GC7000iW 35-42 B/C/BC 23/21**



**Übersetzungsliste**  
**List of translations**

**Liste des traductions**  
**Traduzione delle descrizioni**

Pos	Description	Denomination	Descrizione		
<b>1</b>	<b>Element of construction</b>	<b>Groupe de construction</b>	<b>Gruppo di costruzione</b>		
1	Cover black	Revêtement noir	Pannello protettivo nero		
1	Cover white	Revêtement blanc	Pannello protettivo bianco		
2	Flap black	Cache noir	Copertura nero		
2	Flap white	Cache white	Copertura white		
3	Frame black	Cadre-support noir	Cornice nero		
3	Frame white	Cadre-support blanc	Cornice bianco		
4	Side panel LHS	Paroi latérale LHS	Parete laterale LHS		
5	Screw M4x6 (10x)	Vis M4x6 (10x)	Vite M4x6 (10x)		
6	Seal	Joint	Guarnizione		
7	Expansion vessel	Vase d'expansion GB072 14-24(k)/ GB172	Vaso di espansione		
8	Screw M5X12 (10x)	Vis M5X12 (10x)	Vite M5X12 (10x)		
9	Washer	Joint	Guarnizione		
10	Gasket 18,6x13,5x1,5 (10x)	Joint 18,6x13,5x1,5 (10x)	Guarnizione 18,6x13,5x1,5 (10x)		
11	Side panel RHS	Paroi latérale RHS	Parete laterale RHS		
12	Pipe	Tube	Tubo		
13	Nut 4,8mm (10x)	Ecrou 4,8mm (10x)	Dado 4,8mm (10x)		
14	Seal exhaust 59dia (2x)	Joint D59 (2x)	Guarnizione Ø59 (2x)		
15	Flue pipe	Tuyau de fumées	Condotto per gas combusti		
16	Screw No.10x20 Hex Flange Head (3x)	Vis No.10x20 Hex tête de bride (3x)	Vite No.10x20 Hex testa flangia (3x)		
17	Lip seal DN80	Joint DN80	Guarnizione DN80		
18	Support	Support	Supporto		
19	Screw 4x15 (10x)	Vis 4x15 (10x)	Vite 4x15 (10x)		
20	Hinge LHS	Charnière LHS	Cerniera LHS		
21	Hinge RHS	Charnière RHS	Cerniera RHS		
22	Bracket	Support	Supporto		
23	Screw 8x1/2 ZC PZFL Type B S/Tap Dog Tip	Vis 8x1 / 2 ZC PZFL type B S / guide	Vite 8x1 / 2 ZC PZFL Tipo B S / Tap Dog		
24	Adapter DN80/125	Adaptateur DN80/125	Adattore DN80/125		
25	Grommet	Bouchon a/joint	Coperchietto		
26	Air pressure switch	Contact a pression	Dispositivo manometrico		
27	Bracket APS	Support APS	Supporto APS		
28	Screw M4x8	Vis M4x8	Vite M4x8		

**Übersetzungsliste**  
**List of translations**

**Liste des traductions**  
**Traduzione delle descrizioni**

Pos	Description	Denomination	Descrizione		
29	Hose	Flexible	Tubo flessibile		
30	Hinge	Charnière	Cerniera		
31	Cover	Couvercle	Sportello		
32	Panel bottom	Panneau bas	Pannello sotto		
<b>2</b>	<b>Element of construction</b>	<b>Groupe de construction</b>	<b>Gruppo di costruzione</b>		
1	Heat exchanger WB5-II plus	Échangeur thermique WB5-II plus	Scambiatore di calore WB5-II plus		
2	Electrode kit	Jeu d'électrodes	Set di elettrodi		
3	Gasket (Electrode) Insulfrax (10x)	Joint (Électrode) Insulfrax (10x)	Guarnizione (Elettrodo) Insulfrax (10x)		
4	Flue gas collector	Coupe tirage antirefouleur	Cappa fumi		
5	Temperature limiter	Limiteur de température	Limitatore temperatura		
6	Temperature limiter	Limiteur de température	Limitatore di temperatura		
7	Temperature sensor NTC	Sonde de température NTC	Sonda di temperatura NTC		
8	Service cover WB5-II plus	Couvercle de maintenance WB5-II plus	Copertura per manutenzione WB5-II plus		
9	Seal (Service cover) WB5-II plus	Joint (Couvercle maintenance) WB5-II plu	Guarnizione (Copertura manutenzione)		
10	Condensate tray collector seal	Joint collecteur de condensats	Guarnizione collettore combusti		
11	Seal Ø 87,5mm	Joint Ø 87,5mm	Guarnizione Ø 87,5mm		
12	Seal kit	Jeu de joints	Set di guarnizioni		
13	Seal burner WB5-II plus CMS <=42kW	Joint brûleur WB5-II plus CMS <=42kW	Guarnizione bruciatore WB5-II plus CMS <		
14	Screw M8x42	Vis M8x42	Vite M8x42		
15	Seal (Gas-air duct)	Joint canal mélange gaz-air	Guarnizione (Condotto gas-aira)		
16	Bracket	Support	Supporto		
17	Panel	Panneau	Pannello		
18	Burner cover WB5-II plus	Capot de brûleur WB5-II plus	Coperchio del bruciatore WB5-II plus		
19	Burner WB5-II plus	Brûleur WB5-II plus	Bruciatore WB5-II plus		
20	Screw	Vis	Vite		
21	Nut	Écrou	Dado		
25	Temperature limiter	Limiteur de température	Limitatore di temperatura		
<b>4</b>	<b>Element of construction</b>	<b>Groupe de construction</b>	<b>Gruppo di costruzione</b>		
1	Duct gas - air mixture	CONDUIT DE GAZ - MÉLANGE D'AIR	Duct gas - air mixture		
2	Seal (Gas-air duct)	Joint canal mélange gaz-air	Guarnizione (Condotto gas-aira)		
3	Sound absorber	Silencieux	Silenziatore		
4	Non-return valve	Clapet anti-retour	Valvola di non ritorno		

**Übersetzungsliste**  
**List of translations**

**Liste des traductions**  
**Traduzione delle descrizioni**

Pos	Description	Denomination	Descrizione		
5	Washer	Joint	Guarnizione		
6	Sheet metal	Tôle	Lamierino		
7	O-ring 63x3 (10x)	Joint torique 63x3 (10x)	O-ring 63x3 (10x)		
8	Mixing unit	Chambre de mélange	Unità di miscelazione		
9	Screw M4x8	Vis M4x8	Vite M4x8		
10	Seal securing funnel venturi pipe black	JOINT DE FIXATION TUBE DE VENTURI NOIR	Sigillo venturi nero		
11	Gas pipe	Tube gaz	Tube del gas		
12	Seal (10x)	Joint (10x)	Guarnizione (10x)		
13	O-ring 12x3 (10x)	Joint torique 12x3 (10x)	O-ring 12x3 (10x)		
14	Gas valve	Bloc gaz	Gruppo gas		
15	Gasket Gas valve 41x3 (10x)	Joint gaz valve 41x3 (10x)	Guarnizione valvola gas 41x3 (10x)		
16	Gasket Gas_valve	Joint	Guarnizione		
17	Gas pipe vertical	Tube gaz vertical	Tube gas verticale		
18	Wireform spring (10x)	Epingle (10x)	Molla (10x)		
19	Gasket 25x30x1,5 (10x)	Joint 30x25x1,5 (10x)	Guarnizione 30x25x1,5 (10x)		
20	Fan	Ventilateur	Ventilatore		
21	Venturi 40 kW	Venturi 40 kW	Venturi 40 kW		
22	Screw metrical thread Spec M6x20 (10x)	Vis M6x20 (10x)	Vite M6x20 (10x)		
23	Bolt oblong hexagon M6 WB5	Boulon	Bullone		
24	Bracket	Support	Supporto		
30	Security seal (Venturi) (10x)	Sceau de sécurité (Venturi) (10x)	Sigillo di sicurezza (Venturi) (10x)		
31	Gas-air duct WB5-II+	Conduit gaz-air WB5-II+	Condotto gas-aria WB5-II+		
32	Nut M6 + Screw M6x30-5.8	Ecrou + Vis M6x30-5.8	Dado + Vite M6x30-5.8		
35	Lip seal	Joint	Guarnizione		
<b>5A</b>	<b>Element of construction</b>	<b>Groupe de construction</b>	<b>Gruppo di costruzione</b>		
1	Clip 18mm (10x)	Epingle 18mm (10x)	Molletta di ritenzione 18mm (10x)		
2	Clip 10mm (10x)	Epingle 10mm (10x)	Molletta di ritenzione 10mm (10x)		
3	Clip 13mm	Epingle 13mm	Molletta di ritenzione 13mm		
4	O-ring 12,5x3 WRAS / KTW (1x)	Joint torique 12,5 x3 wras / ktw (1x)	Anello tenuta 12,5x3 WRAS / KTW (1x)		
5	Turbine	Turbine	Turbina		
6	Silencer	Silencieux	Carcassa		
7	Pressure relief valve DHW	Soupape de surpression	Valvola sicurezza		

**Übersetzungsliste**  
**List of translations**

**Liste des traductions**  
**Traduzione delle descrizioni**

Pos	Description	Denomination	Descrizione		
8	O-ring 2,62x6,02 WRAS / KTW (10x)	Joint torique 2,62x6,02 WRAS / KTW (10x)	O-ring 2,62x6,02 WRAS / KTW (10x)		
9	Seal 19,4x8 (10x)	Joint 19,4x8 (10x)	Guarnizione 19,4x8 (10x)		
10	Seal 28,4x8 (10x)	Joint 28,4x8 (x10)	Guarnizione 28,4x8 (10x)		
11	Seal 18,5x24,3 (10x)	Joint 18,5x24,3 (10x)	Guarnizione 18,5x24,3 (10x)		
13	DHW Filter insert	Filtre	Filtro		
14	Clip (10x)	Clip (10x)	Graffa (10x)		
15	Flow restrictor 15ltr. Lime	Limiteur de débit 15l/min	Regolatore di flusso 15l/min		
16	Manifold plate	Collecteur	Colletore		
17	Pump UPM2 15-70W HU1	Circulateur UPM2 15-70W HU1	Pompa UPM2 15-70W HU1		
18	Clip (10x)	Clip tube (10x)	Clip a innesto a U (10x)		
19	Motor Diverter Valve	Servomoteur	Servo motore		
20	Clip (10x)	Clip (10x)	Clip di ritenzione (10x)		
21	Clip (10x)	Clip (10x)	Graffa (10x)		
23	Connection kit Solar HU1	Kit de raccordement Solar HU1	Gruppo di collegamento Solar HU1		
24	elbow	Coude	Curva		
25	Return pipe	Tube retour	Tubo di ritorno		
26	Pipe	Tube	Tubo		
27	Pipe	Tube	Tubo		
28	Pipe	Tube	Tubo		
29	Return unit	Dispositif de retour	Unità di ritorno		
30	Elbow PRV	Raccord soupape de sécurité	Raccordo valvola di sicurezza		
31	Pressure relief valve	Soupape de sécurité	Valvola di sicurezza		
32	Connector Expansion Vessel	Raccord	Raccordo di collegamento		
34	Siphon	Siphon	Sifone		
35	Pressure gauge	Manomètre	Manometro		
36	Temperature sensor NTC	Sonde de température NTC	Sonda di temperatura NTC		
37	Pipe return	Tube retour	Tubo di ritorno		
38	Clip (10x)	Clip tube (x10)	Clip a innesto a U (10x)		
41	Air vent	Purgeur	Disaeratore		
42	Pipe Expansion Vessel	Tube	Tubo Vaso di espansione		
43	Gasket 18,6x13,5x1,5 (10x)	Joint 18,6x13,5x1,5 (10x)	Guarnizione 18,6x13,5x1,5 (10x)		
45	Pipe return	Tube retour	Tubo di ritorno		

**Übersetzungsliste**  
**List of translations**

**Liste des traductions**  
**Traduzione delle descrizioni**

Pos	Description	Denomination	Descrizione		
46	Pipe siphon flex	Tube siphon flex	Tubo siphon flex		
47	O-ring 13,87x3,53 L (10x)	Joint torique 13,87x3,53 L (10x)	O-ring 13,87x3,53 L (10x)		
48	O-ring 17x4 (10x)	Joint torique 17x4 (10x)	O-ring 17x4 (10x)		
49	O-ring 23x4 (10x)	Joint torique 23x4 (10x)	O-ring 23x4 (10x)		
50	Siphon connector	Siphon raccord	Sifone raccordo		
53	O-ring 20,22x3,53 EPDM (10x)	Joint torique 20,22x3,53 EPDM (10x)	O-ring 20,22x3,53 EPDM (10x)		
55	Heat exchanger C-PHE 26 plates	Échangeur thermique C-PHE 26 plates	Scambiatore di calore C-PHE 26 plates		
56	Plug (5x)	Bouchon (5x)	Tappo (5x)		
57	Screw M5x35 (10x)	Vis M5x35 (10x)	Vite M5x35 (10x)		
59	Hose	Tuyau	Tubo flessibile		
60	Hose	Tuyau	Tubo flessibile		
67	Fill and drain cock	robinet de remplissage et de vidange	rubinetto di carico e scarico		
68	Wireform spring(10x)	Epingle (10x)	Molla (10x)		
69	O-ring 15,54x2,62 (10x)	Joint torique 15,54x2,62 (10x)	O-ring 15,54x2,62 (10x)		
73	Plug plastic	PRISE DE COURANT PLASTIQUE	Plug plastic		
74	Gasket 23,9x17,2x1,5 (10x)	Joint 23,9x17,2x1,5 (10x)	Guarnizione 23,9x17,2x1,5 (10x)		
84	O-ring 26,34 x 5,33 (5x)	Joint torique 26,34 x 5,33 (x5)	Anello tenuta 26,34 x 5,33 (5x)		
<b>5B</b>	<b>Element of construction</b>	<b>Groupe de construction</b>	<b>Gruppo di costruzione</b>		
1	Clip 18mm (10x)	Epingle 18mm (10x)	Molletta di ritenzione 18mm (10x)		
2	Clip 10mm (10x)	Epingle 10mm (10x)	Molletta di ritenzione 10mm (10x)		
3	Clip 13mm	Epingle 13mm	Molletta di ritenzione 13mm		
4	O-ring 12,5x3 WRAS / KTW (1x)	Joint torique 12,5 x3 wras / ktw (1x)	Anello tenuta 12,5x3 WRAS / KTW (1x)		
8	O-ring 2,62x6,02 WRAS / KTW (10x)	Joint torique 2,62x6,02 WRAS / KTW (10x)	O-ring 2,62x6,02 WRAS / KTW (10x)		
11	Seal 18,5x24,3 (10x)	Joint 18,5x24,3 (10x)	Guarnizione 18,5x24,3 (10x)		
16	Manifold	Collecteur système	Collettore		
17	Pump UPM2 15-70W HU1	Circulateur UPM2 15-70W HU1	Pompa UPM2 15-70W HU1		
18	Clip (10x)	Clip tube (10x)	Clip a innesto a U (10x)		
19	Motor Diverter Valve	Servomoteur	Servo motore		
20	Clip (10x)	Clip (10x)	Clip di ritenzione (10x)		
24	elbow	Coude	Curva		
25	Return pipe	Tube retour	Tubo di ritorno		
26	Pipe	Tube	Tubo		

**Übersetzungsliste**  
**List of translations**

**Liste des traductions**  
**Traduzione delle descrizioni**

Pos	Description	Denomination	Descrizione		
27	Pipe	Tube	Tubo		
28	Pipe	Tube	Tubo		
29	Return unit	Dispositif de retour	Unità di ritorno		
30	Elbow PRV	Raccord soupape de sécurité	Raccordo valvola di sicurezza		
31	Pressure relief valve	Soupape de sécurité	Valvola di sicurezza		
32	Connector Expansion Vessel	Raccord	Raccordo di collegamento		
34	Siphon	Siphon	Sifone		
35	Pressure gauge	Manomètre	Manometro		
37	Pipe return	Tube retour	Tubo di ritorno		
38	Clip (10x)	Clip tube (x10)	Clip a innesto a U (10x)		
41	Air vent	Purgeur	Disaeratore		
42	Pipe external Expansion Vessel	Tube	Tubo		
43	Gasket 18,6x13,5x1,5 (10x)	Joint 18,6x13,5x1,5 (10x)	Guarnizione 18,6x13,5x1,5 (10x)		
45	Pipe return	Tube retour	Tubo di ritorno		
46	Pipe siphon flex	Tube siphon flex	Tubo siphon flex		
47	O-ring 13,87x3,53 L (10x)	Joint torique 13,87x3,53 L (10x)	O-ring 13,87x3,53 L (10x)		
48	O-ring 17x4 (10x)	Joint torique 17x4 (10x)	O-ring 17x4 (10x)		
49	O-ring 23x4 (10x)	Joint torique 23x4 (10x)	O-ring 23x4 (10x)		
50	Siphon connector	Siphon raccord	Sifone raccordo		
53	O-ring 20,22x3,53 EPDM (10x)	Joint torique 20,22x3,53 EPDM (10x)	O-ring 20,22x3,53 EPDM (10x)		
56	Plug (5x)	Bouchon (5x)	Tappo (5x)		
59	Hose	Tuyau	Tubo flessibile		
60	Hose	Tuyau	Tubo flessibile		
67	Fill and drain cock	robinet de remplissage et de vidange	rubinetto di carico e scarico		
68	Wireform spring(10x)	Epingle (10x)	Molla (10x)		
69	O-ring 15,54x2,62 (10x)	Joint torique 15,54x2,62 (10x)	O-ring 15,54x2,62 (10x)		
73	Plug plastic	PRISE DE COURANT PLASTIQUE	Plug plastic		
74	Gasket 23,9x17,2x1,5 (10x)	Joint 23,9x17,2x1,5 (10x)	Guarnizione 23,9x17,2x1,5 (10x)		
84	O-ring 26,34 x 5,33 (5x)	Joint torique 26,34 x 5,33 (x5)	Anello tenuta 26,34 x 5,33 (5x)		
<b>6</b>	<b>Element of construction</b>	<b>Groupe de construction</b>	<b>Gruppo di costruzione</b>		
1	Control Box CUS TRIM G-LOW	Tableau électrique CUS TRIM G-LOW	Casella di controllo CUS TRIM G-LOW		
2	Fuse 5x20 F 5A (50x)	Fusible 5x20 F 5A (50x)	Fusibile 5x20 F 5A (50x)		

**Übersetzungsliste**  
**List of translations**

**Liste des traductions**  
**Traduzione delle descrizioni**

Pos	Description	Denomination	Descrizione		
3	Cover	COUVERTURE	Copertura		
4	Cover	COUVERTURE	Copertura		
5	Cover	COUVERTURE	Copertura		
6	Strain relief	Serre-câble	Ferma cavo		
9	connecting terminal 2-pol FR/ FS blue	Borne de connexion 2-pol FR/ FS bleu	Morsetto di collegamento 2-pol FR/FS blu		
10	connecting terminal 2-pol HW/ CH yellow	Borne de connexion 2-pol HW/ CH jaune	Morsetto collegamento 2-pol HW/CH giallo		
11	connecting terminal 3-pol N/L orange	Borne de connexion 3-pol N/L orange	Morsetto di collegamento 3-pol arancione		
12	connecting terminal 3-pol N/L grey	Borne de connexion 3-pol N/L gris	Morsetto di collegamento 3-pol N/L grigio		
13	connecting terminal 3-pol N/L violet	Borne de connexion 3-pol N/L violet	Morsetto collegamento 3-pol N/ L violetto		
14	connecting terminal 3-pol N/L green	Borne de connexion 3-pol N/L vert	Morsetto di collegamento 3-pol N/L verde		
15	connecting terminal 3-pol N/L white	Borne de connexion 3-pol N/L blanc	Morsetto di collegamento 3-pol N/ bianco		
16	connecting terminal 2-pol green (5x)	Borne de connexion 2-pol vert (5x)	Morsetto di collegamento 2-pol verde(5x)		
17	connecting terminal 2-pol orange (5x)	Borne de connexion 2-pol orange (5x)	Morsetto di collegamento 2-pol arancione		
18	connecting terminal 2-pol red (5x)	Borne de connexion 2-pol rouge (5x)	Morsetto di collegamento 2-pol rosso		
19	connecting terminal 2-pol blue (5x)	Borne de connexion 2-pol bleu (5x)	Morsetto di collegamento 2-pol blu (5x)		
20	connecting terminal 2-pol grey (5x)	Borne de connexion 2-pol gris (5x)	Morsetto di collegamento 2-pol grigio		
21	connecting terminal 2-pol brown (5x)	Borne de connexion 2-pol brun (5x)	Morsetto di collegamento 2-pol bruno(5x)		
23	Code plug 1682 (NG)	Clé de codage 1682 (NG)	Chiave di codifica 1682 (NG)		
23	Code plug 1684 (LPG)	Clé de codage 1684 (LPG)	Chiave di codifica 1684 (LPG)		
23	Code plug 1688 (NG)	Clé de codage 1688 (NG)	Chiave di codifica 1688 (NG)		
23	Code plug 1690 (LPG)	Clé de codage 1690 (LPG)	Chiave di codifica 1690 (LPG)		
24	Transformer	Transformateur	Trasformatore primario		
25	Fixing bracket	Support	Angolare		
26	Fixing bracket	Support	Angolare		
27	Cable tree HV	Faisceau de câbles HV	Cablaggio HV		
28	harness ignition cable	Conduite de gaz d'allumage	Conducto del gas de combustión		
29	Cable tree LV Combi PWM	Faisceau de câbles LV Combi PWM	Cablaggio LV Combi PWM		
29	Cable tree LV System PWM	Faisceau de câbles LV System PWM	Cablaggio LV System PWM		
29	Harness main	Faisceau des câbles	Cablaggio		
30	Power cable	Câble de réseau	Cavo di rete		
31	Cable	Faisceau	Cablaggio		
32	Bracket Spark igniter	Support	Supporto		

**Übersetzungsliste**  
**List of translations**

**Liste des traductions**  
**Traduzione delle descrizioni**

Pos	Description	Denomination	Descrizione		
33	Screw M4x6 (10x)	Vis M4x6 (10x)	Vite M4x6 (10x)		
	Gas conversion set LPG-->NG	KIT CONV.GAZ LPG-->NG	Kit conversione gas LPG-->NG		
	Gas conversion set NG-->LPG	KIT CONV. GAZ NG-->LPG	Kit conversione gas NG-->LPG		
	Gas conversion set LPG-->NG	KIT CONV.GAZ LPG-->NG	Kit conversione gas LPG-->NG		
	Gas conversion set NG-->LPG	KIT CONV. GAZ NG-->LPG	Kit conversione gas NG-->LPG		

**Gerätetypen**  
**Types of appliances**

**Types de chaudières**  
**Tipo apparecchi**

Gerät Appliance Chaudière Apparecchio	Bestell-Nr. Ordering no. Numéro de commande N° d'ordine	Land Country Pays Paese	Bemerkungen Remarks Remarques Osservazioni
GC7000iW 42 B 23/21	7 736 901 102	Deutschland	
GC7000iW 42 23/21	7 736 901 103	Deutschland,Luxemburg	
GC7000iW 35 BC 23/21	7 736 901 100	Deutschland,Österreich	
GC7000iW 35 C 23/21	7 736 901 101	Deutschland,Österreich	



**BOSCH**

Bosch Thermotechnik GmbH  
Junkersstr. 20-24  
D-73249 Wernau / Germany