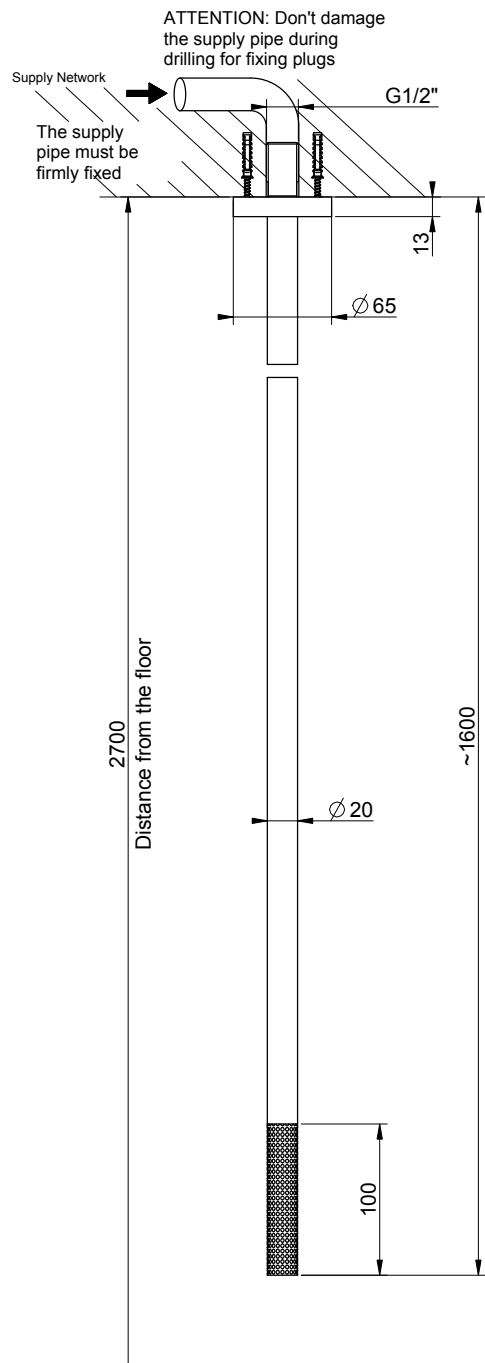
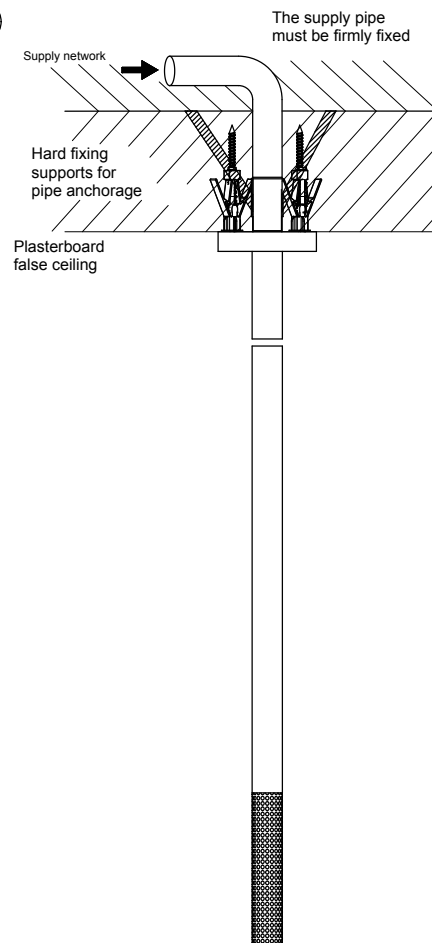


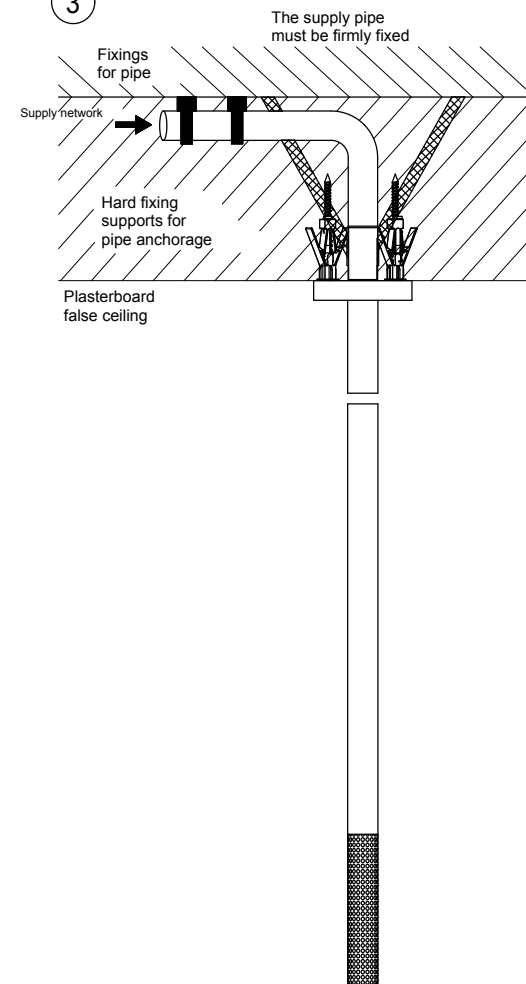
1



2



3



ATTENTION: In the second and third case hard fixing supports are not provided in the box but they need to be realized by the installer during the installation phase

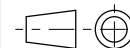
**GESSI**

**GESSI 316 54499**

BOCCA DA SOFFITTO L = 1600 MM

Formato

**A4**



Dis.: GPF544990000G000

Gessi S.p.A. Parco Gessi, 13037 Serravalle Sesia (Vercelli) Italy Tel.0039 0163 454111 Fax.0039 0163 453150 www.gessi.com e-mail:gessi@gessi.it

*This drawing by its legislation cannot be disclosed or reproduced without a written authorization released by GESSI S.p.A. - 2017 Copyright® GESSI S.p.A.*