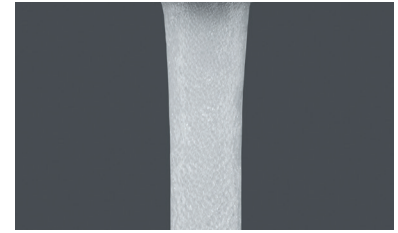


Datasheet



flow, stop and go®

CACHÉ® HONEYCOMB® Aerator TT Size Male M16.5x1



Aerator with integrated M16.5x1 thread for seamless faucet design options.

Aerated stream

Technical Characteristics

Materials	plastics: POM, PP elastomers: EPDM, silicone
Operating conditions	temperature: 60°C/140°F max. continuous, 70°C/158°F short-term supply line pressure: max. 6 bar/87 psi continuous, max. 8.5 bar/123 psi ≤ 3 min. avoid water hammer
Standards	materials meet all relevant international drinking water certifications

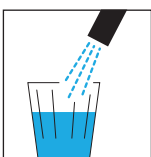
Model Overview

Restricted flow rates	Color Code	Part no.	Wetted surface area (in mm²)
1.0 gpm max. @60 psi	ivory	44.3231.010	3932
1.5 gpm max. @60 psi	green	44.3232.010	3931
1.75 gpm max. @60 psi	brown	44.3239.010	3930
2.0 gpm max. @60 psi	olive	44.3233.010	3929
X (2.2 gpm max @60 psi)	red	44.3234.010	3928
V optimum performance & aeration: 0.2-1 bar	blue/white	44.3230.010	3538

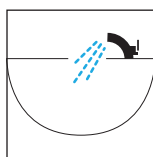
Imperial PCA® flow rates	Color Code	Part no.	Wetted surface area (in mm²)
PCA® 1.0 gpm max.	blue	44.3258.010	4006
PCA® 1.2 gpm max.	pink	44.3260.010	4006
PCA® 1.5 gpm max.	green	44.3256.010	4006
PCA® 1.75 gpm max.	light blue	44.3261.010	4006
PCA® 2.0 gpm max.	lilac	44.3257.010	4006
PCA® 2.2 gpm max.	yellow	44.3253.010	4006

Metric PCA® flow rates	Color Code	Part no.	Wetted surface area (in mm²)
PCA® 5.0 l/min.	orange	44.3251.010	4006
PCA® 6.0 l/min.	black	44.3252.010	4006
PCA® 7.0 l/min.	light green	44.3255.010	4006
PCA® 8.0 l/min.	white	44.3254.010	4006

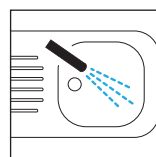
Application Areas



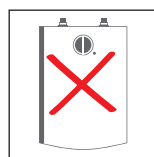
Drinking water only



Basin faucet



Kitchen faucet



Not suitable for pressureless water heaters

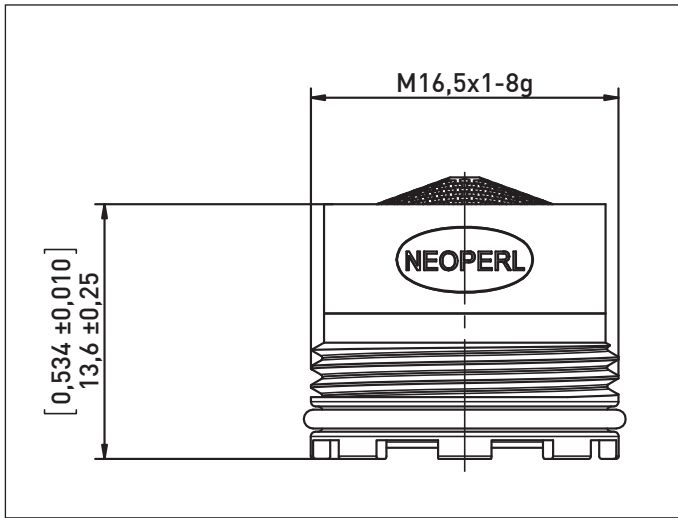
Datasheet

CACHÉ® HONEYCOMB® Aerator
TT Size Male M16.5x1

NEOPERL®

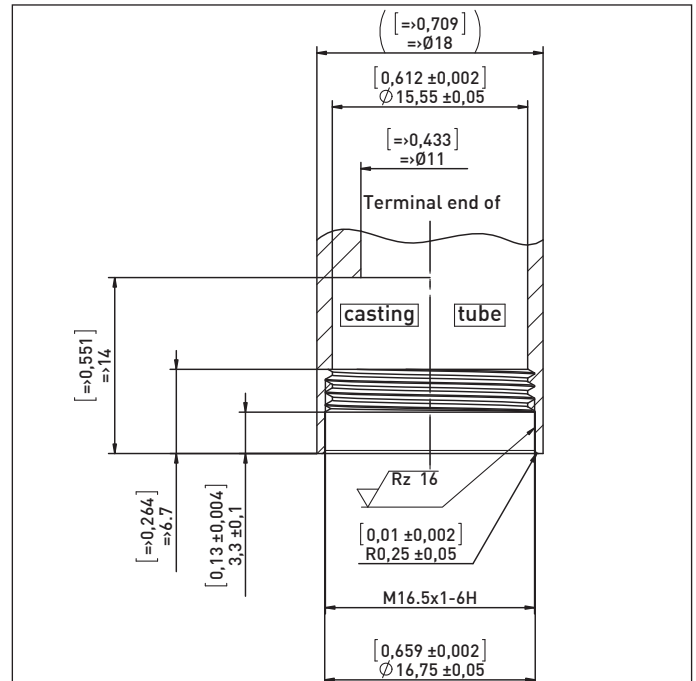
flow, stop and go®

Dimensions (in mm)



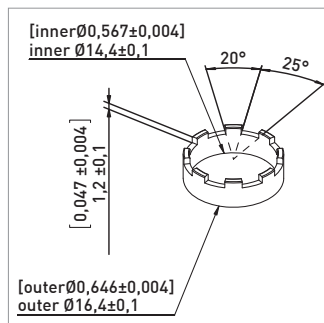
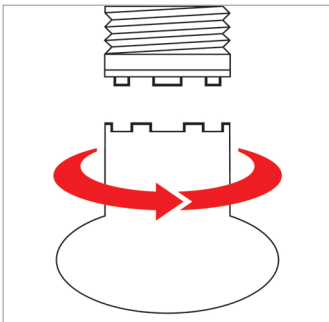
CACHÉ® HC TT M16.5x1

For pressure resistance reasons,
thread must be true to gage!
Screw aerator in until flush with spout end.



Recommended Mounting Dimensions

Assembly Instructions



ATTENTION!
Max. mounting torque **0.5 Nm**
Do not use silicone oil/grease

Use NEOPERL key 09.9171.0 or spare aerator cartridge to assemble or exchange the aerator or refer to above dimensions for self-made assembly tools.

ATTENTION!
Product may not be altered!
Shall not be used for hot water application exceeding 70°C

Disclaimer
Neoperl aerators are designed exclusively for the use with drinking water. For use in non-drinking water applications, tests must be carried out and confirmed by the customer himself.