

Datasheet



CASCADE® SLC PCA® DC Aerator with DUAL-CORE® Technology STD Size

flow, stop and go®



Materials used

Body: POM/PBT
O-Rings: EPDM
Washer: NBR
Outlet Structure: Silicone



Aerated stream

PCA® DUAL-CORE® aerators are made for all pressure conditions. Nominal flow is already reached at very low pressures, also providing much earlier aeration and thus a soft and comfortable feel.

With SLC feature: Limescale can be easily rubbed off with your finger.



Model Overview

CASCADE® SLC PCA® DUAL-CORE®

Color coded flow rate		STD Insert	M22x1	M24x1	Wetted Surface Area (in mm ²)
PCA® 1.0 gpm max.	blue	40.0013.000	40.0013.023	40.0013.033	5774
PCA® 1.2 gpm max.	pink	40.0014.000	40.0014.023	40.0014.033	5774
PCA® 1.5 gpm max.	green	40.0015.000	40.0015.023	40.0015.033	5774
PCA® 1.75 gpm max.	light blue	40.0017.000	40.0017.023	40.0017.033	5813
PCA® 2.1 gpm max.	red	40.0016.000	40.0016.023	40.0016.033	5813

Assembly Instructions

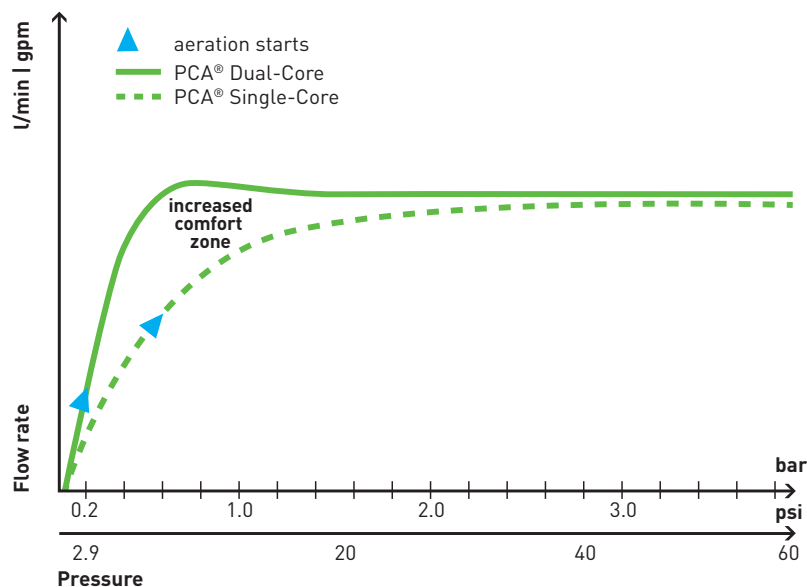
ATTENTION!
Product may not be altered!
May not be used for hot water application exceeding 70°C

ATTENTION!
Max. mounting torque 1.5 Nm
steadily applied

Suitable Housings

Please refer to the datasheet „Housing Overview STD Size“.

Flow Curve



Datasheet

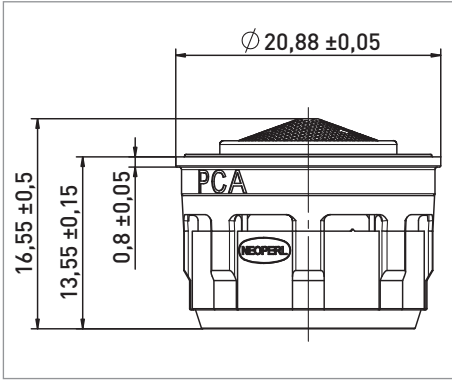


CASCADE® SLC PCA® DC Aerator with DUAL-CORE® Technology STD Size

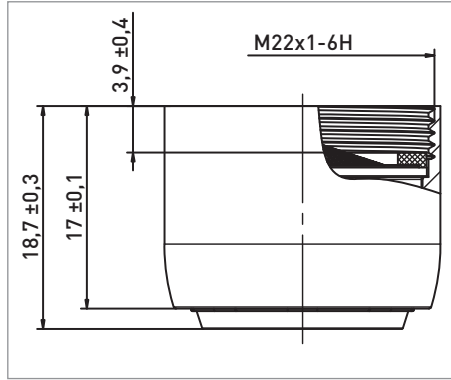
flow, stop and go®

Dimensions (in mm)

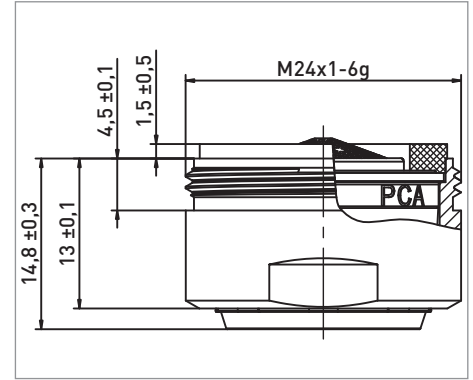
according to EN246



CC SLC PCA DC insert

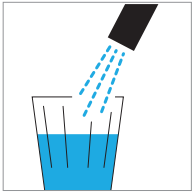


CC SLC PCA DC M22x1

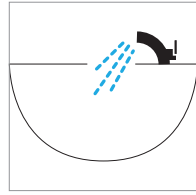


CC SLC PCA DC M24x1

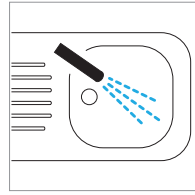
Application Areas



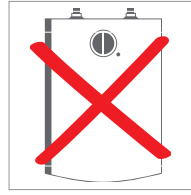
Drinking water only



Basin faucet



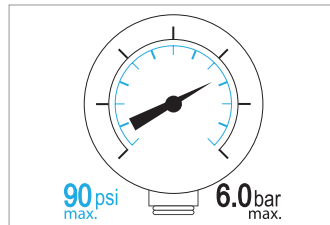
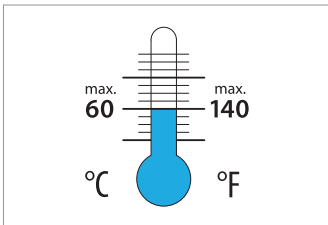
Kitchen faucet



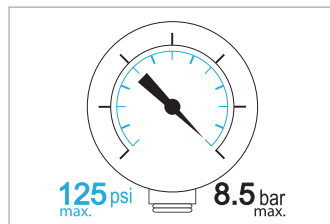
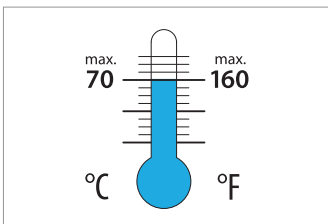
Not suitable for pressureless water heaters

Operating Conditions

Continuous



Short-term (3 minutes max.)



Indicated pressure values refer to supply line pressure.
Avoid water hammer.

Trademarks are registered in various countries